

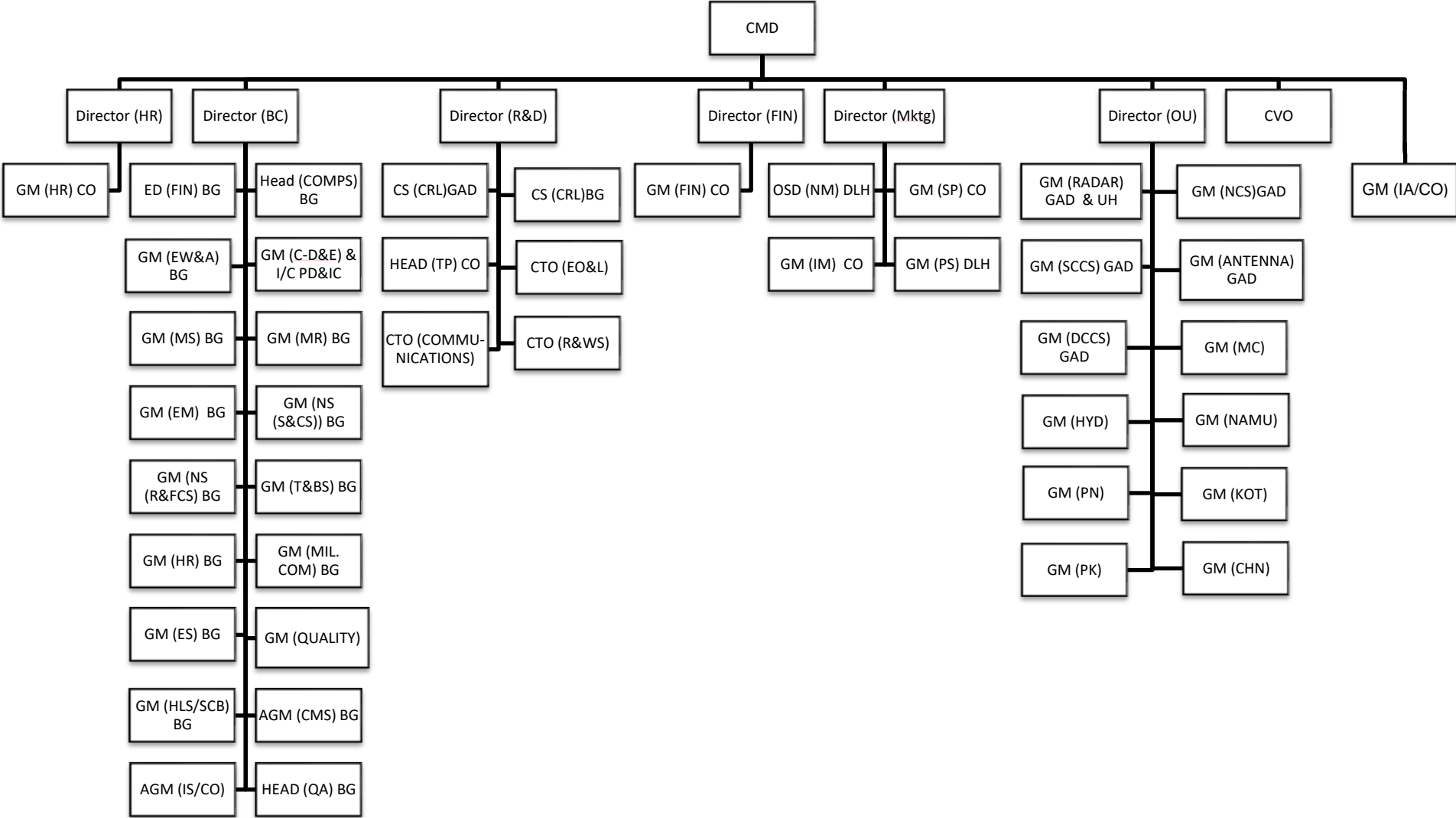
Particulars of its Organisation, Functions & Duties:

- [History](#)
- [Leadership](#)
- [Quality](#)
- [What We Do](#)
- [Manufacturing Units](#)
- Subsidiary
 - [BEL OPTRONICS DEVICES LIMITED](#)
 - [BEL THALES SYSTEMS LIMITED](#)
- [Joint Venture](#)
- [Research & Development](#)
- [Contact Us](#)

Norms set by BEL for discharge of its functions. The norms for discharge of functions are clearly mentioned in our vision, mission, values and objective statement as follows:

[Vision, Mission & Objectives](#)

ORGANISATION CHART OF BEL



See below for Abbreviations Used

CTO	: CHIEF TECHNOLOGY OFFICER	EO&L	: ELECTRO OPTICS & LASER
R&WS	: RADAR & WEAPON SYSTEMS	BC	: BANGALORE COMPLEX
HR	: HUMAN RESOURCES	FIN	: FINANCE
R&D	: RESEARCH & DEVELOPMENT	OU	: OTHER UNITS
MKTG	: MARKETING	MR	: MILITARY RADAR
C-D&E	: CENTRAL – DEVELOPMENT & ENGINEERING	MIL.COM.	: MILITARY COMMUNICATION
MS	: MISSILE SYSTEMS	COMPS	: COMPONENTS
EW&A	: ELECTRONIC WARFARE & AVIONICS	ES	: ENGINEERING SERVICES
EM	: EXPORT MANUFACTURING	NS (S&CS)	: NAVAL SYSTEMS (SONAR & COMMUNICATION SYSTEM)
NS (R&FCS)	: NAVAL SYSTEMS (RADAR & FIRE CONTROL SYSTEM)	T&BS	: TELECOM & BROADCASTING SYSTEM
CMS	: CENTRAL MANUFACTURING SERVICE	HLS & SCB	: HOME LAND SECURITY & SMART CITY BUSINESS
IS	: INFORMATION SYSTEMS	QA	: QUALITY ASSURANCE
BAE	: BEL ACADEMY FOR EXCELLENCE	CRL/GAD	: CENTRAL RESEARCH LABORATORY / GHAZIABAD
CRL/BG	: CENTRAL RESEARCH LABORATORY / BANGALORE	TP	: TECHNOLOGY PLANNING
PD&IC	: PRODUCT DEVELOPMENT & INNOVATIVE CENTER	IA/CO	: INTERNAL AUDIT / CORPORATE OFFICE
IM	: INTERNATIONAL MARKETING	SP	: STRATEGIC PLANNING
NM/DLH	: NATIONAL MARKETING / DELHI	PS/DLH	: PRODUCT SUPPORT / DELHI
MC	: MACHILIPATNAM	NCS/GAD	: NETWORK CENTRIC SYSTEM / GHAZIABAD
NAMU	: NAVI MUMBAI	SCCS/GAD	: SATCOM & CELLULAR COMMUNICATION SYSTEM/ GHAZIABAD
KOT	: KOTDWARA	ANT & UH/GAD	: ANTENNA & UNIT HEAD / GHAZIABAD
CHN	: CHENNAI	HYD	: HYDERABAD
PK	: PANCHKULA	PN	: PUNE